

**Heysea Yacht Group Limited**

**Website:** [www.heyseayachts.com](http://www.heyseayachts.com)

**Email:** [sales@heysea.com](mailto:sales@heysea.com)

HeySea

# VISTA 75

— Built by Heysea





# VISTA 75

— Built by Heysea



# LUXURY UNVEILED EMBRACING SPACIOUS GRANDEUR

Vista 75 stands as a testament to luxury, comfort, and innovation on the water. From its impressive dimensions to its meticulously designed spaces, every aspect of this yacht has been crafted to exceed expectations and provide an unparalleled yachting experience. Featuring spacious outdoor areas and thoughtful amenities, Vista 75 surpasses all expectations for a yacht of its size. Whether basking in the sun on the foredeck, enjoying a meal with loved ones, or exploring the mysterious charm of the sea, every moment aboard the Vista 75 is an unforgettable adventure. From its serene flybridge to its luxurious owner's cabin, every detail has been meticulously crafted to provide unparalleled comfort and enjoyment for owners and guests alike. Embark on a journey of luxury and relaxation aboard the Vista 75, and discover the true essence of yachting excellence.









## FLYBRIDGE

At BBQ and Refreshment center, tantalizing flavors await to delight your palate. As night descends, recline on daybed under the twinkling stars visible through the skylight, enjoying the magic moment.

For adventurers, flybridge offers the thrill of navigating the open seas from extra-large helm seating, perfect for couples embarking on unforgettable voyages. With impeccable docking vision, maneuvering the vessel with confidence is effortless.







The flybridge deck emerges as a tranquil oasis, inviting you to unwind and socialize in luxurious surroundings. Unwind in captivating spa, where the gentle ocean breeze invites you to escape the stresses of everyday life and embrace tranquility. Marvel at the breathtaking BAR counter enveloping the spa, offering unparalleled views that stretch beyond the horizon and set the stage for unforgettable moments.





## FOREDECK

Step onto the foredeck, meticulously crafted for an unparalleled outdoor experience.

Integrated poles effortlessly create a fully shaded area, providing sophisticated retreat from the sun. This innovation ensures comfort for all onboard.

Safety is paramount, especially in the seating area. Meticulous design caters to pets and children, offering peace of mind to all passengers. Access is seamless, facilitating anchoring and boat handling with efficiency. Whether you're a seasoned sailor or a novice, navigating this space is intuitive.





For uninterrupted relaxation, crew access is discreetly located, providing a separate haven for peaceful enjoyment.





## AFTDECK

Adding to the outdoor experience is the hydraulic swim platform on the aftdeck, which offers versatility by expanding the social area when raised and seamlessly integrating with the diving platform when lowered.









## MAIN DECK

Surrounded by glass windows, the salon is bathed in natural light from every angle. Front and rear dual-sliding glass doors beckon guests to seamlessly transition from the salon to the foredeck or aftdeck, inviting them to discover the mysterious charm of the sea. The kitchen island takes center stage in the salon, creating a welcoming space for friends and family to gather comfortably while preparing food or enjoying a glass of wine.





















## LOWER DECK

The lower deck is designated as a private living space for the owner and guests. The owner's cabin is a marvel, featuring amenities such as a TV, dressing table, bar fridge, and a working table. This space serves not only as a bedroom but also as a home office.

Guest cabins are thoughtfully designed with a walk-in wardrobe, lounge area, and an independent bathroom. Every detail in the design reflects meticulous attention, providing a hotel-like experience where only the subtle sound of waves serves as a reminder that owner and guests are at sea.







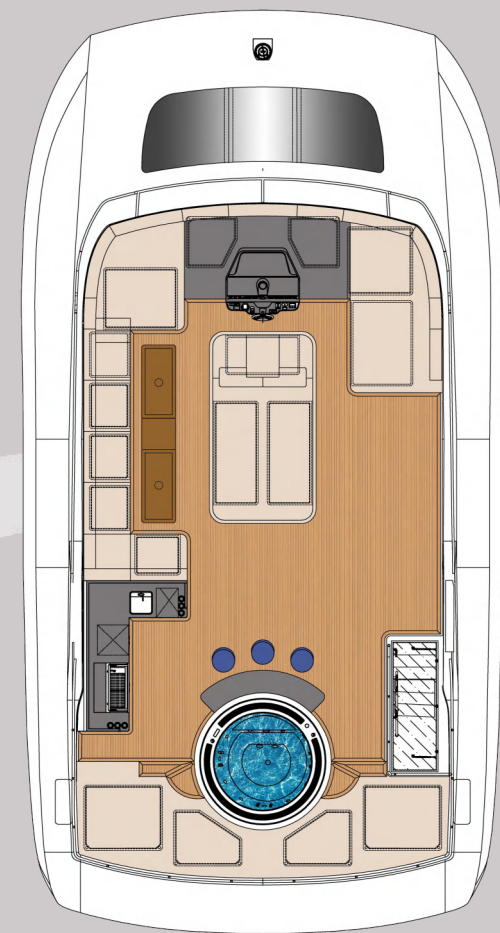


HeySea





# OPTION A



Flybridge



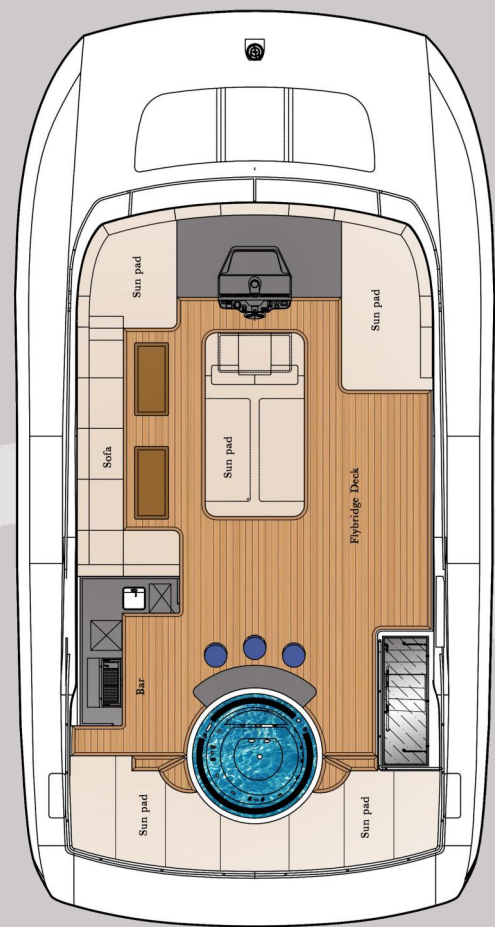
Main Deck



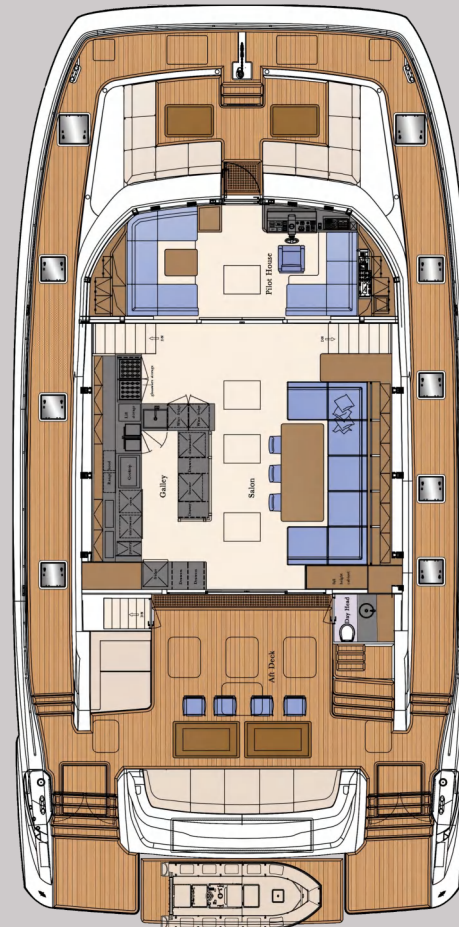
Lower Deck



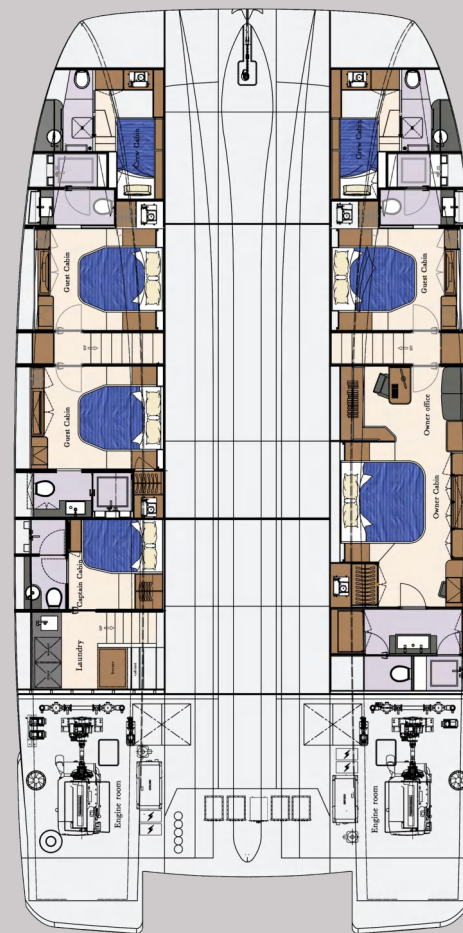
# OPTION B



Flybridge



Main Deck



Lower Deck



# VISTA 75

Built by Heysea

## SPECIFICATION

<b>Length overall:</b>	22.88M (75'0")
<b>Beam:</b>	11.28M (37'0")
<b>Draft at Half Load:</b>	1.64M (5'4")
<b>Displacement at Half Load:</b>	90MT(198,416LBS)
<b>Gross Tonnage:</b>	148GT
<b>Main Engine:</b>	2 × VOLVO D13-1000HP
<b>Fuel Capacity:</b>	10,000 Ltrs (2,642 US Gal.)
<b>Fresh Water:</b>	1,500Ltrs (396 US Gal.)
<b>Max Speed:</b>	20 Knots
<b>Range:</b>	2000NM@8Knots
<b>Guests and Crews:</b>	A:12;B:18;C:24
<b>Generators:</b>	2 × Kohler 28KW
<b>Material:</b>	GRP
<b>Classification:</b>	CE Certified
<b>Builder:</b>	Heysea Yachts
<b>Exterior and Interior Design:</b>	Paolo Dose









HeySea







HeySea

